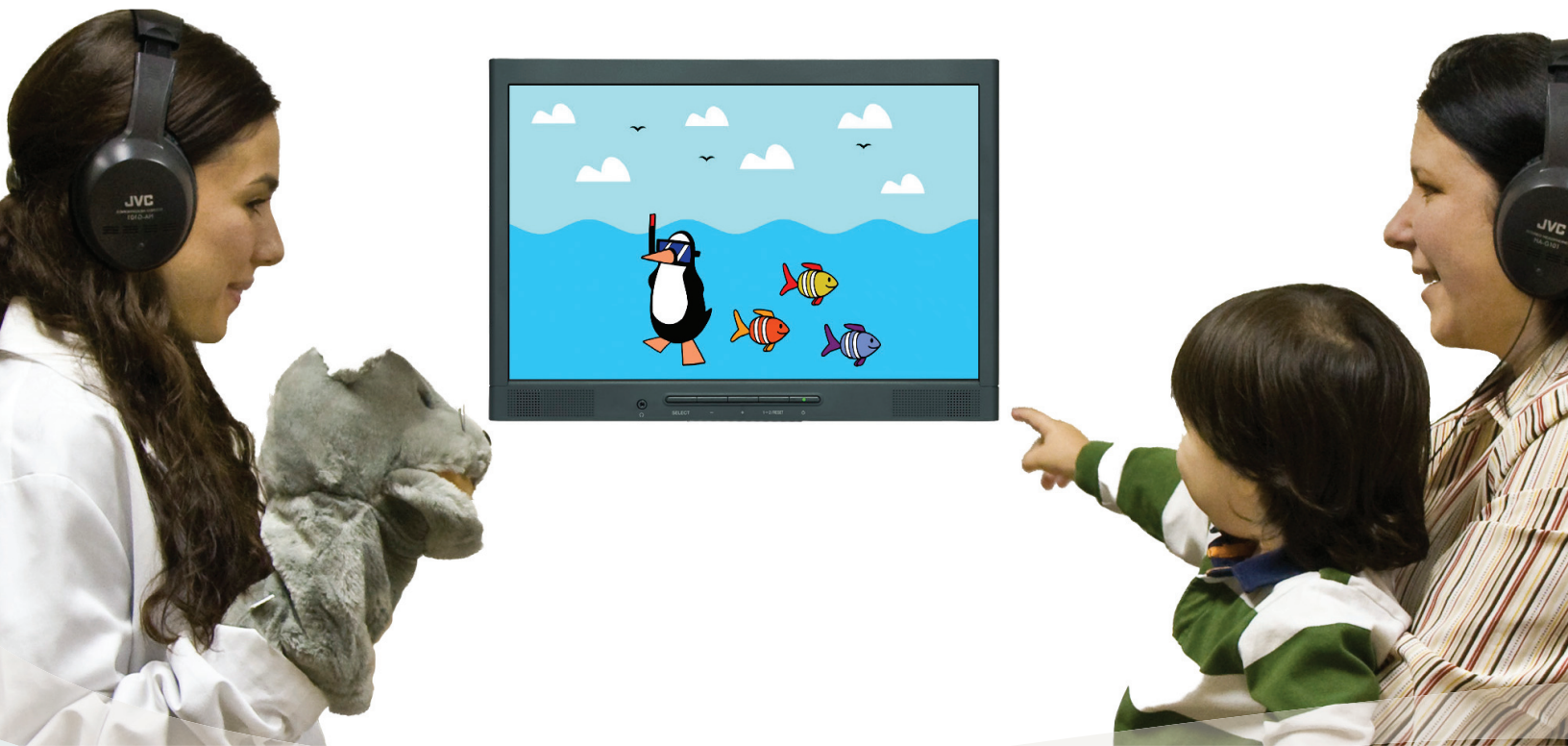


Smart VRA Options

IntelligentVRA

Manual VRA

VideoVRA



the smart choice for VRA testing

We offer both automated and manual VRA solutions, with both video and traditional toy cabinet options.

Intelligent Visual Reinforcement Audiometry (IVRA) is an advanced computerized tool for automated hearing screening and testing of infants, children, and the developmentally disabled. IVRA takes the speculation out of VRA analysis by providing three automated test routines. IVRA has been extensively tested and clinically proven to be highly successful in its evaluation accuracy and efficiency.

Why switch to automated VRA?

- Tests can be administered by a single examiner who is free to focus on patient behavioral control
- The system automatically selects the frequency and intensity of trials
- Automated VRA testing is faster than manual testing
- The IVRA software automatically generates patient audiograms and trial-by-trial data

IntelligentVRA is available on our Universal Smart Box (USB) and Duet (video reinforcer option) platforms.

In addition to the automated IVRA system, we are pleased to offer two types of stand-alone manual VRA systems that can be used with a user-supplied audiometer: Manual VRA (toy cabinet) and Video VRA.



Intelligent VRA

Automated visual reinforcement audiometry.

- Increased reliability & accuracy by a single examiner
- Choose from our variety of 4 and 10 second colorful, animated wide-screen video clips, or use your own video clips
- Use one of our three automated test routines, administer a speech discrimination paradigm (IVRISD), or run a VRA test manually
- Probe Trials maintain patient attention while testing near threshold
- Control Trials allow you to determine the reliability of a test
- Trial-by-trial reports include detailed information for each test sequence
- Final report includes audiogram and threshold for each frequency tested

CAST™

Classification of Audiograms by Sequential Testing selects the best-fitting audiogram from 9 patterns, for fast and efficient screening.

OHTA™

Optimized Hearing Test Algorithm is designed to test four frequencies, non-sequentially in an intensity staircase fashion.

5-up/5-down

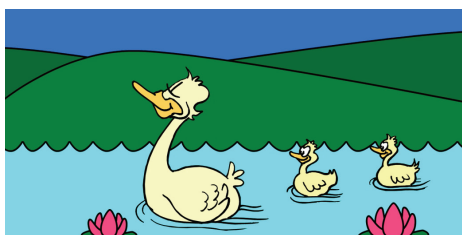
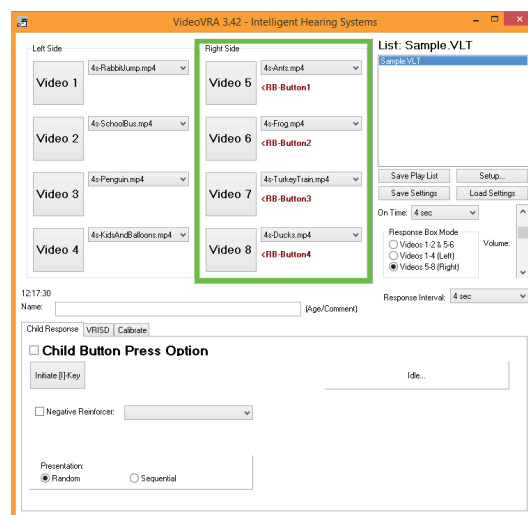
Automated 'step-up, step-down' intensity staircase procedure for testing thresholds at up to four selected frequencies.



Video VRA

Unlimited video reinforcement variety for VRA testing.

- Use with the audiometer of your choice
- Choose from our variety of 4 and 10 second colorful, animated wide-screen videos, or use your own clips
- Design multiple, customized video playlists to keep the child's attention longer
- Easy-to-use controls: activate video reinforcement by simply pushing a button on our response box or innovative wireless response box
- Activate videos using your mouse or keyboard
- Up to two reinforcement monitors and one centering monitor
- Visual Reinforcement Infant Speech Discrimination (VRISD) option to assess infant speech perception
- Windows PC Required



Wireless Response
Box



USB
Response Box

Manual VRA

traditional toy cabinet reinforcement for VRA testing.

- Use with the audiometer of your choice
- Choose from a large variety of fun, animated toys
- Large, ultra-dark, sturdy acrylic cabinets.
- Select the configuration that meets your needs from 1, 2, 3, 4, or 5 cabinets
- Small, ergonomic and easy to handle response box controls all toys
- Select between toy animation with lights or lights-only reinforcement
- Bright and energy-efficient LED lights



Specifications

IntelligentVRA

Available on the Universal Smart Box (USB) & Duet platforms

Reinforcement Options

- Up to 4 acrylic toy cabinets (Universal Smart Box only)
- Animated toys and LED lights
- Activate lights only or lights and animation
- Variety of video clips for video option

Transducers

- ER-3C Insert Earphones:
 - Intensity: 0 - 130 dB SPL
 - Frequency Range: 125 Hz - 10 kHz
- TDH Headphones:
 - Intensity: 0- 120 dB SPL
 - Frequency Range: 125 Hz - 12 kHz
- Bone Conductor:
 - Intensity: 0 - 98 dB SPL
 - Frequency Range: 250 Hz - 8 kHz
- Sound field amplifier and speakers

Power Requirements

- Universal Smart Box (USB):
 - 100- 240 VAC, 50/60 Hz
 - 1.3 A, 45W
- Master Control Box:
 - 100-240 VAC 50/60Hz, 5.5A 65 W
- Duet:
 - 115-230 VAC, 50/60Hz
 - 560-350 mA, 30W

Operating Environment

- Portable Equipment, Indoor use
- Operating temperature: 15 - 35 °C
- Relative humidity: 15% to 90% at 40 °C non-condensing

Storage

- Temperature: 0 °C - 50 °C

Standards Compliance

- Safety: IEC 60601-1 Class II, Type BF
- EMC: IEC 60601-1-2
- Medical Device Directive: 93/42/EEC

Computer Requirements

- Windows 7, 8, or 10 operating system
- Minimum 4 GB RAM
- Minimum 5 GB hard drive space
- Minimum XGA display (1024x768 screen resolution)
- Mouse or other pointing device
- One free USB Port
- Removable media, network drive, or secure Internet storage site for data backup (recommended)
- Printer (optional)

Manual VRA

Traditional toy cabinet reinforcers to be used with a user supplied audiometer, PC not required.

Toy Cabinet

- Up to 5 acrylic toy cabinets
- Variety of animated toys
- LED lights
- Activate lights only or lights and animation

Power Requirements

- 100 - 240 VAC, 50/60 Hz,
- 5.5 A 65 W

Operating Environment

- Portable Equipment
- Indoor use
- Operating temperature: 15-40 °C
- Relative humidity: 5% to 90% at 40 °C non-condensing

Storage

- Temperature: 0-50°C

VideoVRA

Unilateral and bilateral reinforcers to be used with a user-supplied audiometer

Video format

- Includes 24 widescreen animated videos
- User-supplied MP4, AVI, or MPG

Power Requirements

- USB Response Box:
 - +5V C, 500mA
 - Powered using USB port
- Wireless Response Box:
 - 1.5 V AA alkaline battery

Operating Environment

- 15 - 35 °C

Storage

- Temperature: 0 °C - 50 °C

Computer Requirements

- Windows 10 operating system
- Minimum 4 GB RAM
- Minimum 5 GB hard drive space
- Minimum XGA display (1024x768 screen resolution)
- Mouse or other pointing device
- One free USB Port
- Desktop PC with on board video capability; three VGA, DVI, or HDMI display ports (one for main control window, and two for video reinforcers (for bilateral video reinforcement)